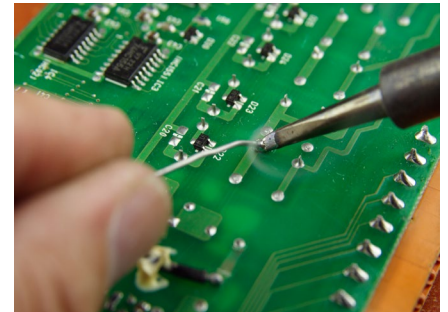


Soldering Tips - Weller Compatible MS SERIES

Compatible Stations: Weller WSL, WD, WS and WSD stations, and Weller WSP and MPR irons. Comparable to Weller's LT series of tips.

Plato is one of the largest manufacturers of soldering tips in the world, producing tips to fit all of the most popular soldering stations. The long life and fast heat recovery of Plato soldering tips increases user effectiveness and decreases production times.

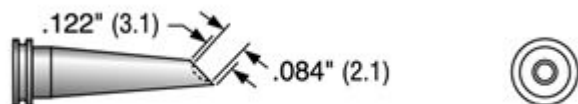
- Fast heat recovering increases soldering speed
- Longer tip reduces manufacturing costs
- Fewer tip change overs



Product Dimensions

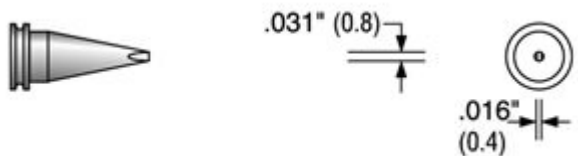
MS-0100 SMD flow tip

Cross Reference: Weller LTGW
2.1mm
10 units/bag



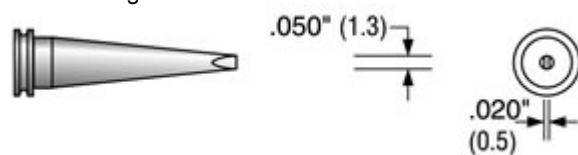
MS-3110 Screwdriver

Cross Reference: Weller LTH
0.4mm
10 units/bag



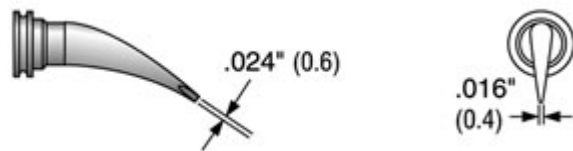
MS-3150 Screwdriver, long

Cross Reference: Weller LTK
1.3mm
10 units/bag



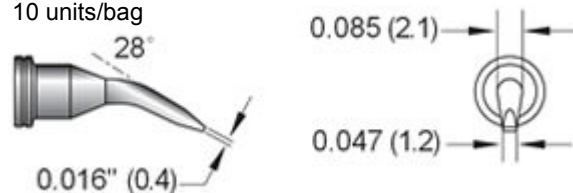
MS-3101 Angled SMD

Cross Reference: Weller LTHX
0.6mm
10 units/bag



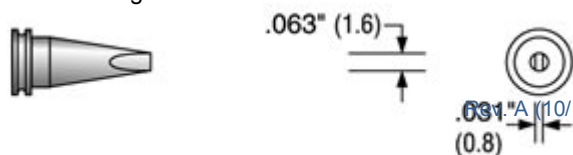
MS-3125 Angled SMD

Cross Reference: Weller LT4X
0.4mm
10 units/bag



MS-3200 Screwdriver

Cross Reference: Weller LTA
1.6mm
10 units/bag

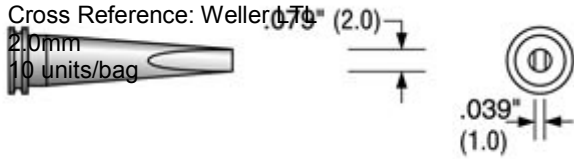


Soldering Tips - Weller Compatible

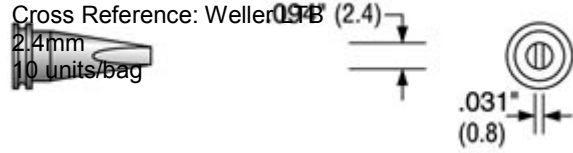
MS SERIES

Product Dimensions

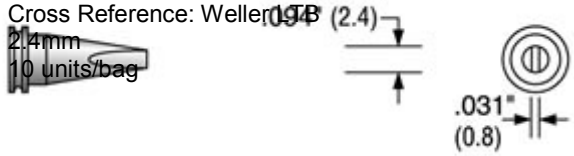
MS-3250 Screwdriver, long



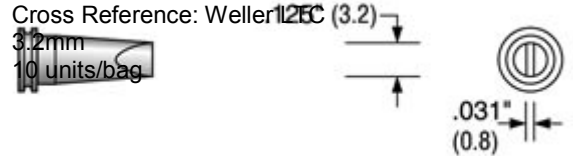
MS-3300 Screwdriver



MS-3300LF Screwdriver, long-life



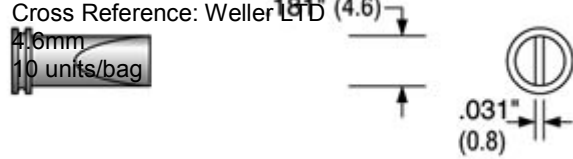
MS-3400 Screwdriver



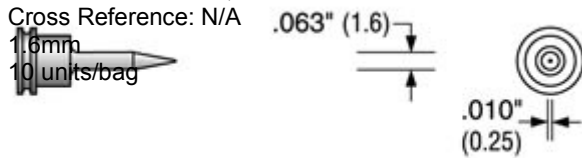
MS-3450 Screwdriver, long



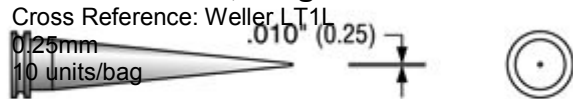
MS-3600 Screwdriver



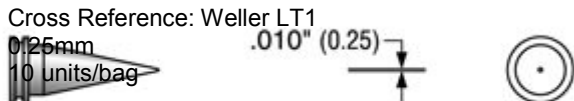
MS-4100 Point, micro



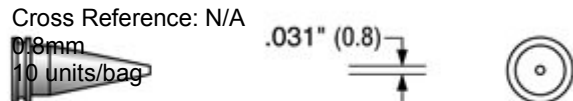
MS-4110 Point, long



MS-4120 Point



MS-4140 Conical



Product Dimensions



1.2mm
10 units/bag

Environmental Policy

We are committed to developing products to ensure a safer and cleaner environment. We will continue to meet and sustain the regulations of all federal, state and local government agencies.

Resources

Plato products are supported by global sales, technical and customer services resources.

For additional technical information on these products or other Plato products in the United States, call the technical sales department at 800-858-4043, email info@platoproducts.com or visit our web site at: www.platoproducts.com.

Important Notice to Purchaser/User: The information in this publication is based on tests that we believe are reliable. The results may vary due to differences in tests type and conditions. We recommend that each user evaluate the product to determine its suitability for the intended application. Conditions of use are outside our control and vary widely. Our only obligation and your only solution is replacement of product that is shown to be defective when you receive it. In no case will we be liable for any special, incidental, or consequential damages based on breach of warranty, negligence or any other theory.



● North America

ITW Contamination Control - Electronics
8125 Cobb Center Drive
Kennesaw, GA 30152
800-858-4043
info@platoproducts.com

● Europe

ITW Contamination Control BV
Saffierlaan 5, 2132 VZ Hoofddorp
The Netherlands
+31 88 1307 400
info@itw-cc.com

● Countries outside the US

Call to locate a distributor in your country